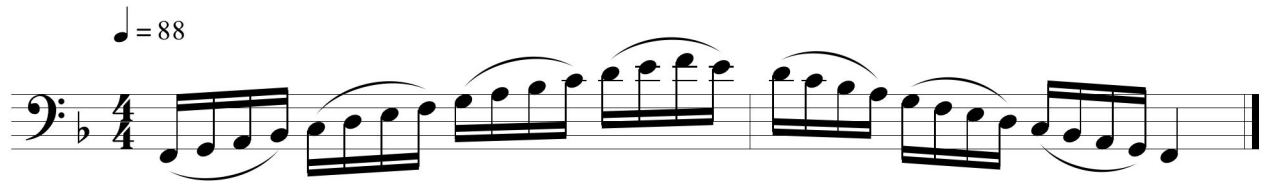


IMEA All-State Auditions

Double Bass

#5 is a one minute excerpt from traditional solo literature. The solo should be a piece of the student's choosing not to exceed 1 minute in length. The chosen piece should be relatively difficult for the student, but should demonstrate the student's musical strengths. Pieces from each instrument's solo repertoire are recommended.

1. Two-octave F Major scale: Play sixteenth notes ascending and descending, slur four notes per bow. (Quarter note = 88)



2. Two-octave E melodic minor scale: Play sixteenth notes ascending and descending, detaché. (Quarter note = 72)



3. Exercise 1, Allegro, page 2. Measures 1 through 9. (Quarter note = 90) From *Double Bass Studies, No. 1*, *Allegro* by Felipe Libon. Public Domain available at [IMSLP](https://imslp.org/).

Allegro.

4. Exercise 12, Allegretto, page 14. Measure 1 through beat 1, half note of measure 14. (Quarter note = 80)
From *Double Bass Studies, No. 12, Allegretto* by Felipe Libon. Public Domain available at [IMSLP](https://imslp.org/)

Allegretto.

12. *mf*

p *mf*

p *f*

3 4 2 4 1 4 1

5. Choose and play a one-minute excerpt from your solo literature.